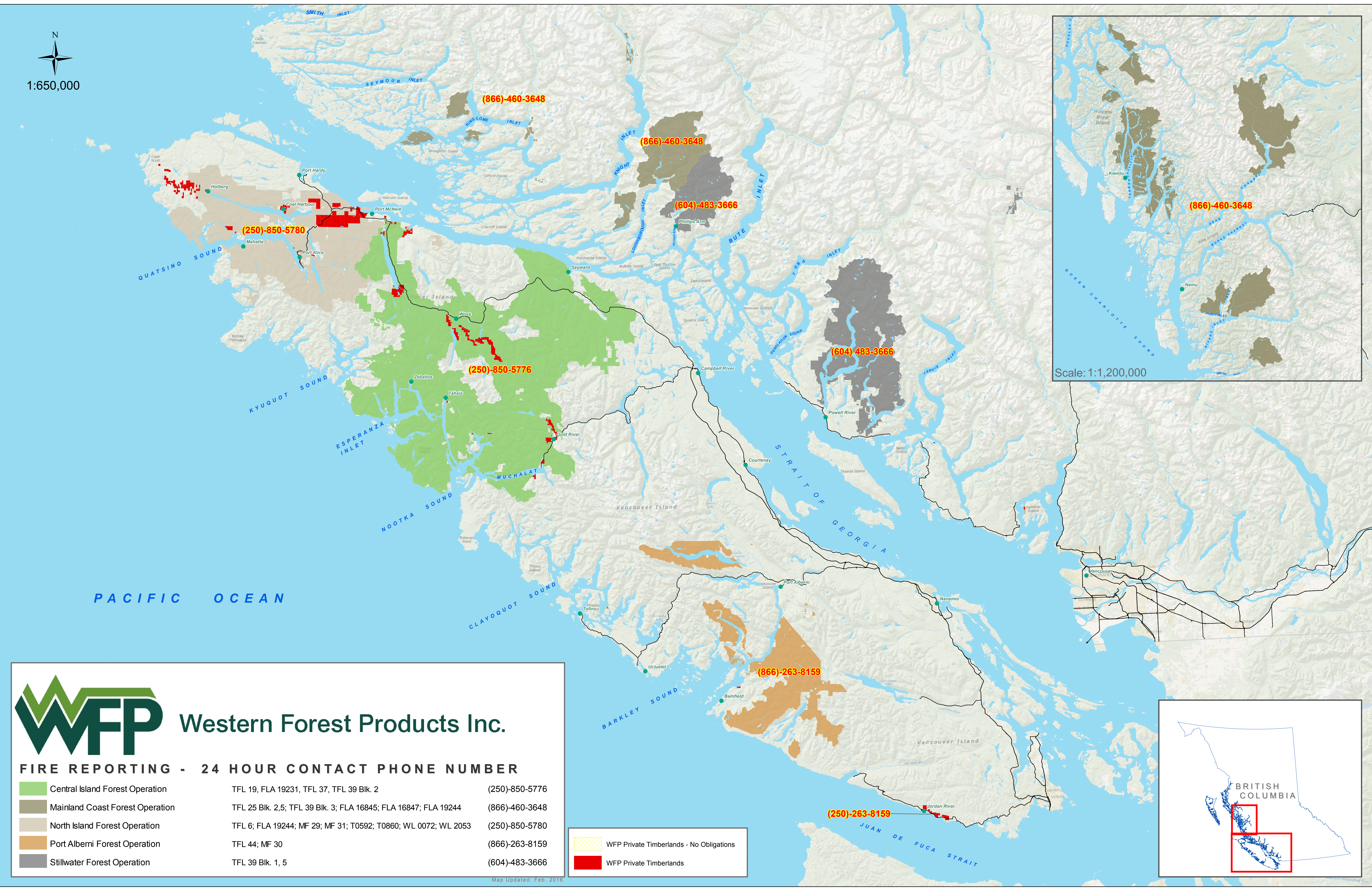


N  
1:650,000



## Western Forest Products Inc.

**FIRE REPORTING - 24 HOUR CONTACT PHONE NUMBER**

|                                 |   |                |
|---------------------------------|---|----------------|
| Central Island Forest Operation | TFL 19, FLA 19231, TFL 37, TFL 39 Bik. 2                        | (250)-850-5776 |
| Mainland Coast Forest Operation | TFL 25 Bik. 2,5; TFL 39 Bik. 3; FLA 16845; FLA 16847; FLA 19244 | (866)-460-3648 |
| North Island Forest Operation   | TFL 6; FLA 19244; MF 29; MF 31; T0592; T0860; WL 0072; WL 2053  | (250)-850-5780 |
| Port Alberni Forest Operation   | TFL 44; MF 30   | (866)-263-8159 |
| Stillwater Forest Operation     | TFL 39 Bik. 1, 5  | (604)-483-3666 |

Map Updated: Feb. 2016

- WFP Private Timberlands - No Obligations
- WFP Private Timberlands

